

RAPCO DE-ICERS

MCCAULEY DE-ICE BRUSH CLUSTERS FROM RAPCO



These McCauley De-Ice Brush Clusters from Rapco are FAA-PMA approved and are applicable to any aircraft using the McCauley style brush blocks. Two clusters per block are required. Brush clusters with dash numbers require one of each dash number per block.

RAPCO No.	Block No.	Installation	Part No.	Price
RAB40012	C40010	Cessna: T182, TR182, 340A, 402C, 404, 414A, 421C, 425	05-01326	\$67.75
RAB40046	C40055	Cessna: U206G, TU206G, 210N, P210N, T210N, 210R, T210R, 310P, T310P, 310Q, T310Q, 310R, T310R, 441	05-01328	\$149.80
RAB40189	C40179	Cessna: T182, TR182, 340A, 402C, 404, 414A, 421C, 425	05-01327	\$87.75
RAB40193	C40187	Cessna: U206G, TU206G, 210N, T210N, 210R, P210N, T210R, T303, 441	05-01329	\$106.75
RAC40256-1	C40257	Raytheon: F33A, V35B, A36, B36TC, 58, 58A, 58P, 58PA, 58TC, 58TCA, B200, B200C, B200CT, B200T	05-01330	\$74.85
RAC40256-2	C40257	Raytheon: F33A, V35B, A36, B36TC, 58, 58A, 58P, 58PA, 58TC, 58TCA, B200, B200C, B200CT, B200T	05-01331	\$74.85
RAB40332	C40331	Fairchild: SA227-AT, SA227-AC, SA227-BC, SA227-CC, SA227-DC	05-01334	\$85.75
RAC40371-1	C40363	Raytheon: B200, B200C, B200T, B200CT, A200CT	05-01332	\$87.75
RAC40371-2	C40363	Raytheon: B200, B200C, B200T, B200CT, A200CT	05-01333	\$87.75
RAC40464-1	C40463 & C40685	Beechcraft: 95-55, 95-A55, 95-B55, 95-B55A, 95-B55B, (T42), 95-C55, 95-C55A, 95-D55, 95-D55A, 95-E55, 95-E55A, A200CT (RC-12K), A200CT (RC-12P), A200CT (RC-12Q)	05-13270	\$179.75
RAC40464-2	C40463 & C40685	Beechcraft: 95-55, 95-A55, 95-B55, 95-B55A, 95-B55B, (T42), 95-C55, 95-C55A, 95-D55, 95-D55A, 95-E55, 95-E55A, A200CT (RC-12K), A200CT (RC-12P), A200CT (RC-12Q)	05-13271	\$179.75
RAC40522-1	C40660	Cessna: 182S, 182T, T182T, 206H, T206H	05-13273	\$160.75
RAC40522-2	C40660	Cessna: 182S, 182T, T182T, 206H, T206H	05-13274	\$160.75



RAPCO PROPELLER DE-ICERS

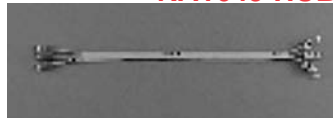
Model No.	Replaces	Description	Part No.	Price
RA1288-3	BFG PN. 4E1188-3 Safeway PN. 6848	28 volt wire element with 4.92 ohms resistance 3 wire integral 12" lead with ring terminals For standard rotation propeller	05-11740	\$165.75
RA1288-4	BFG PN. 4E1188-4, Safeway PN. 6904	28 volt wire element with 4.92 ohms resistance 3 wire integral 14.25" lead with ring terminals For standard rotation propeller	05-12573	\$149.80
RA1288-5	BFG PN. 4E1188-5 Safeway PN. 5735 or 6975	28 volt wire element with 4.92 ohms resistance 3 wire integral 1.5" lead with ring terminals For standard rotation propeller	05-11741	\$165.75
RA1288-7	BFG PN. 4E1188-7, Safeway PN. 6905	28 volt wire element with 4.92 ohms resistance 3 wire 6" leads with ring terminals For standard rotation propeller	05-12574	\$149.80
RA1314-2	BFG PN. 4E1314-2 Safeway PN. 6981	14 volt wire element with 1.14 ohms resistance 3 wire integral 12.25" lead with ring terminals For standard rotation propeller	05-11746	\$165.75
RA1701-3	BFG PN. 4E1601-3 Safeway PN. 6888	28 volt wire element with 4.92 ohms resistance 3 wire integral 12" lead with ring terminals For counter rotation propeller	05-12575	\$149.80
RA1701-7	Replaces: BFG PN. 4E1601-7 Safeway PN. 6870	28 volt wire element with 4.92 ohms resistance 3 individual wire 6.25" leads For counter rotation propeller	05-11754	\$165.75
RA1995-2	BFG PN. 4E1895-2 Safeway PN. 6985	14 volt wire element with 12.5 ohms resistance 3 wire integral 12" lead with ring terminals For counter rotation propeller	05-11758	\$147.75
RA2056-4	Safeway PN. 5855BSW or 6615SW Cessna PN. C165013-0601 McCauley PN. B-40183-04	28 volt wire element with 4.92 ohms resistance 3 wire integral 1.75" lead with ring terminals For counter rotation propeller	05-12576	\$149.80
RA2252-2	BFG PN. 4E2152-2 or 4E2716, Safeway PN. 6936SW or 6205SW, Cessna PN. 6205, McCauley PN. B-40183-02	28 volt wire element with 4.92 ohms resistance 3 wire integral 1.5" lead with ring terminals For standard rotation propeller	05-12577	\$149.80
RA2252-4	BFG PN. 4E2152-4 Safeway PN. 6553SW McCauley PN. B-40183-06	28 volt wire element with 4.92 ohms resistance 3 wire integral 2" lead with ring terminals For counter rotation propeller	05-12578	\$149.80
RA2815-1	BFG PN. 4E2715-1 Safeway PN. 6199SW Cessna PN. C165013-0701	28 volt wire element with 4.92 ohms resistance 3 wire integral 9" lead with ring terminals For standard rotation propeller	05-11778	\$165.75
RA2948	BFG PN. 4E2702 Safeway PN. 6592SW McCauley PN. B-40183-01 or B40183-019	28 volt wire element with 4.92 ohms resistance 3 flat metal 1" leads with ring terminals For standard rotation propeller	05-12579	\$149.80

RAPCO RA38572 ALCOHOL FEED SHOE



RA38572 Alcohol Feed Shoe. Replaces BFG PN. 37527. EASA approved. P/N 05-11780\$56.75

RA1649 HUB EXTENDER



3 wire, 9 1/2" long, ring terminals. Replaces: BFG PN. 3E1549. BFG: Most BFG de-ice part numbers convert to RAPCO part numbers by changing the prefix to RA and adding 100 to the base number. P/N 05-11753\$56.75



DEICE BRUSH MODULE SPACERS

Spacers are replacement parts for the Modular De-ice brush assemblies.

Model No.	Replaces	Description	Part No.	Price
RA2318-3	BFG PN. 3E2218-3	1 5/8" W x 1 1/2" L x 3/32" T	06-02936	\$25.80
RA2318-4	BFG PN. 3E2218-4	1 5/8" W x 1 1/2" L x 1/8" T	06-02937	\$25.80
RA2318-5	BFG PN. 3E2218-5	1 5/8" W x 7/8" L x 5/16" T	06-02938	\$25.80
RA2318-6	BFG PN. 3E2218-6	1 5/8" W x 1 3/8" D x 5/16" T	06-02939	\$25.80

RA2111U UNIVERSAL DE-ICE BRUSH MODULE KIT



RA2111U Universal Brush Module Kit with unrodded brush, wire markers, terminal and spacer. Replaces: BFG PN. 3E2011-1 thru -6 & -8 brush modules with unrodded brushes. P/N 05-11763\$86.75

RA2111U-ROD UNIVERSAL DE-ICE BRUSH MODULE KIT WITH ROD



RA2111U Universal rodded brush module kit with wire markers, terminal and spacer. Replaces: BFG PN. 3E2011-1 thru -6, -8 & -10 brush modules with rodded brushes. P/N 05-11764\$86.75

WEAR STRIP



Insert for brush slots on BFG heavy duty brush blocks assemblies PNs. 4E3196-1 or 4E3197-1, used on Beechcraft 1900, 1900C (C-12J), 1900D. P/N 06-02935\$8.95