

# CONTROL SYSTEM SUPPLIES



## AN100 CABLE THIMBLES

Made of cadmium plated steel or stainless steel per procurement specification MIL T-5677. Used to form sturdy eye end on control cable. Form cable around thimble and secure with Nicopress sleeve.

Cadmium Plated Steel Thimbles			Cable Size	Stainless Steel Thimbles		
AN Part No.	Price Each	Price Per 100		AN Part No.	Price Each	Price Per 100
AN100-3	\$0.16	\$12.80	1/16"	AN100C-3	\$0.25	\$20.00
AN100-4	\$0.15	\$12.00	3/32", 1/8"	AN100C-4	\$0.24	\$19.20
AN100-5	\$0.22	\$17.60	5/32"	AN100C-5	\$0.44	\$35.20
AN100-6	\$0.21	\$16.80	3/16"	AN100C-6	\$0.48	\$38.40
AN100-7	---	---	7/32"	AN100C-7	---	---
AN100-8	\$0.52	\$41.60	1/4"	AN100C-8	\$1.31	\$104.80
AN100-12	\$1.61	\$128.80	3/8"	AN100C-12	\$5.35	\$428.00



## AN111 CABLE BUSHINGS

Made of cadmium plated steel. Used in same manner as AN100 cable thimble.

Dash No.	Cable Size	Price Ea.
-3	1/16", 3/32"	\$2.10
-4	1/8"	\$2.85
-5	5/32"	\$2.76
-6	3/16"	\$3.60

Less 20% for 100



## AN115 CABLE SHACKLES

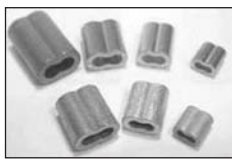
Made of cadmium plated forged steel per specification MIL-S-5675.

AN 115 Dash No.	Shackle Strength Lbs.	Cable Size	Used With		Price Each
			Thimble	Clevis Pin	
-8	800	1/16"	AN100-3	AN393-9	\$13.65
-21*	2100	3/32", 1/8"	AN100-4	AN393-11	\$10.85
-32	3200	5/32"	AN100-5	AN394-15	\$22.75
-46	4600	3/16"	AN100-6	AN395-17	\$39.90

\*Replaces AN115 - 16.

DISCOUNT: Less 10% for 12, 15% for 25, 20% for 50 or more. May be assorted.

## WIRE ROPE SLEEVES (MS51844)



Oval shaped copper sleeves used in making eye or lap splices in flexible cable. Sleeves are slipped over the two strands of cable to be fastened and are then compressed with special Nicopress hand squeezers. Provides a bond that is even stronger than a standard splice. "18" Series sleeves are plain copper and "28" Series sleeves are zinc plated.

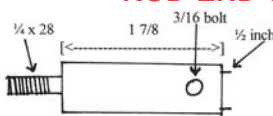
Part No	Nicopress Ref.	Cable Dia.	Matl./Finish	Price	
				Each	100
MS51844-42	18-1-C	1/16"	Copper/Plain	\$0.08	\$6.80
MS51844-43	18-2-G	3/32"	Copper/Plain	\$0.13	\$11.05
MS51844-44	18-3-M	1/8"	Copper/Plain	\$0.30	\$25.50
MS51844-45	18-4-P	5/32"	Copper/Plain	\$0.44	\$37.40
MS51844-46	18-6-X	3/16"	Copper/Plain	\$0.77	\$65.45
MS51844-22	28-1-C	1/16"	Copper/Zinc	\$0.07	\$5.60
MS51844-23	28-2-G	3/32"	Copper/Zinc	\$0.13	\$10.40
MS51844-24	28-3-M	1/8"	Copper/Zinc	\$0.33	\$26.40
MS51844-25	28-4-P	5/32"	Copper/Zinc	\$0.46	\$36.80
MS51844-26	28-6-X	3/16"	Copper/Zinc	\$0.85	\$36.80

## STOP SLEEVES

These copper stop sleeves are used on the ends of bare cables.

Cable Dia.	Model No.	Part No.	Price Ea.
1/16"	ST2-2	04-00899	\$0.38
3/32"	ST2-3	04-00901	\$0.47
1/8"	ST2-4	04-00902	\$0.47
5/32"	ST2-5	04-00903	\$0.64
3/16"	ST2-6	04-02061	\$1.14

## ROD END SWIVEL BEARING



Permanently lubricated in-line swivel for rod end bearing or clevis fork. For applications where rod needs to swivel in a rotary motion to reduce binding while maintaining a straight line to control or stabilizer rod. For use on 1/2" rod and will fit 1/4" x 28 female rod end or clevis fork.

P/N 05-01021 ..... \$23.85



## NAS287 TERMINAL CHAIN

NAS287-25-3 3/32" cable size..... P/N 04-02064 ..... \$17.75  
 NAS287-25-2 1/16" cable size..... P/N 04-02032 ..... \$11.75  
 NAS287-35-4 1/8" cable size..... P/N 04-02065 ..... \$15.75



## AN481 CLEVIS FORK ROD ENDS (MS27976)

Manufactured of 1035 or 1042 carbon steel and cadmium plated. Minimum tensile strength 65,000 PSI. For welding to steel tubing or riveting to aluminum tubing. All sizes fit inside of 3/8" O.D. x .035 wall steel tubing.

Current Part No.	Old Part No.	Clevis Pin Hole Dia.	Fork Width		Price Each
			Overall	Inside	
MS27976-1	AN481-1P	1/4"	1/2"	17/64"	\$21.75
MS27976-2	AN481-2P	1/4"	5/16"	9/64"	\$17.75
MS27976-3	AN481-3P	3/16"	1/2"	17/64"	\$21.70
MS27976-4	AN481-4P	3/16"	5/16"	9/64"	\$19.50



## AN486 THREADED CLEVIS FORK ROD ENDS (MS27975)

These rods ends are machined from 1035 or 1042 carbon steel and cadmium plated. Minimum tensile strength 65,000 PSI. They are internally threaded 1/4"-28. Used for engine controls.

Current Part No.	Old Part No.	Clevis Pin Hole Dia.	Fork Width		Internal Thread	Price Each
			Overall	Inside		
MS27975-1	AN486-1P	1/4"	1/2"	17/64"	1/4-28	\$15.90
MS27975-2	AN486-2P	1/4"	5/16"	9/64"	1/4-28	\$16.80
MS27975-3	AN486-3P	3/16"	1/2"	17/64"	1/4-28	\$18.50
MS27975-4	AN486-4P	3/16"	5/16"	9/64"	1/4-28	\$18.65
AN486-1032	Special	3/16"	7/16"	3/16"	10-32	\$9.75

## AN490 THREADED ROD ENDS

Manufactured of 4130 steel, heat-treated and cadmium plated. Minimum tensile strength 125,000 PSI. For welding to steel tubing or riveting to aluminum tubing.



PN AN490HT-16P

Part Number	Thread Size	Used With Tube Size	Price Each
AN490HT5P	1/4-28	5/16"x.035	\$19.90
AN490HT6P	1/4-28	3/8"x.035	\$13.75
AN490HT8P	1/4-28	1/2"x.035	\$14.65
AN490HT10P	5/16-24	5/8"x.035	\$17.65
AN490HT11P	5/16-24	3/4"x.035	\$16.50
AN490HT14P	3/8-24	3/4" x .035	\$16.90
AN490HT15P	5/16-24	1/2"x.058	\$18.40
AN490HT16P	3/8-24	1/2"x.058	\$22.50



## AN665 THREADED CLEVIS TIE ROD TERMINALS

These Zinc plated steel terminals are manufactured to AN specifications, with either right-hand or left-hand threads. Example: P/N AN665-10L has a 6-40 lefthand thread. AN665-34R has a 1/4-28 right-hand thread. Order Terminal Assemblies if locknut, clevis pin, and cotter pin are required along with terminal. Otherwise, only terminals are supplied.

\*Note - Cad Plated Terminals are no longer being manufactured due to enviromental reasons. Once the cad plated stock is depleted the zinc plated terminals will be shipped. Please note that we can not guarantee cad plated terminals will be received.

Dash No.	Right Hand	Left Hand	Thrd. Size	Fork Pin Hole Dia.	Inside Width	Sgth. (Lbs.)	AN665 Rt. only	AN665 Lt. only
							Price Ea.	Price Ea.
-10R	-10L	6-40	.190"	.109"	1200	\$10.50	\$10.50	
-21R	-21L	10-32	.190"	.150"	2400	\$11.75	\$11.75	
-34R	-34L	1/4-28	.250"	.203"	4200	\$22.50	\$22.50	
-46R	-46L	5/16-24	.313"	.203"	4600	\$28.90	\$28.50	
-61R	-61L	5/16-24	.375"	.203"	6900	\$32.85	\$32.85	
-80R	-80L	3/8-24	.375"	.266"	10000	\$45.75	\$44.65	

## AN665 TERMINAL ASSEMBLIES

These terminal assemblies include the AN665 terminals plus the appropriate lock nut, clevis pin, and cotter pin.

Description	Part No.	Price	Description	Part No.	Price
AN665-10R	05-02300	\$11.00	AN665-10L	05-02400	\$11.50
AN665-21R	05-02500	\$12.00	AN665-21L	05-02600	\$12.25
AN665-34R	05-02700	\$22.75	AN665-34L	05-02800	\$23.00
AN665-46R	05-02900	\$29.75	AN665-46L	05-03000	\$29.50
AN665-61R	05-03100	\$33.50	AN665-61L	05-03200	\$34.00
AN665-80R	05-03300	\$46.75	AN665-80L	05-03400	\$46.25